



NORKA

**CENTAURUS
HIGH POWER LED FLOODLIGHT**



NORKA

LUCON® - LUMINAIRE CONNECTION SYSTEM

- › Significant time savings of up to 80% during connection of the luminaire
- › Polarised connector plug
- › Plug-and-play
- › High ingress protection IP 65
- › Optional version





SWIVEL BRACKET

- > Version for ceiling mounting with stainless steel swivel bracket
- > Swivel range from +45° to -45°

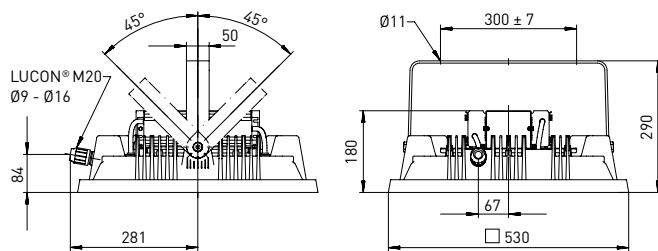
LED ARRAYS

- > Warm white (W)
- > Neutral white (N)
- > Cold white (C)
- > High CRI (WHC)

EFFICIENCY

- › Highest system-efficiency with 130 lm/W
- › Maximized uniformity
- › Minimized quantity of luminaires
- › Low investment costs
- › Dimmable

CENTAURUS with swivel bracket (LUCON® optional), max. weight 20,2 kg



CENTAURUS with eye bolts (LUCON® optional), max. weight 18,2 kg

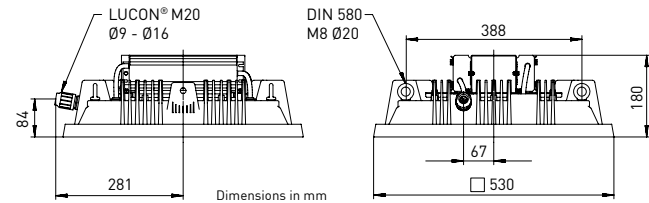


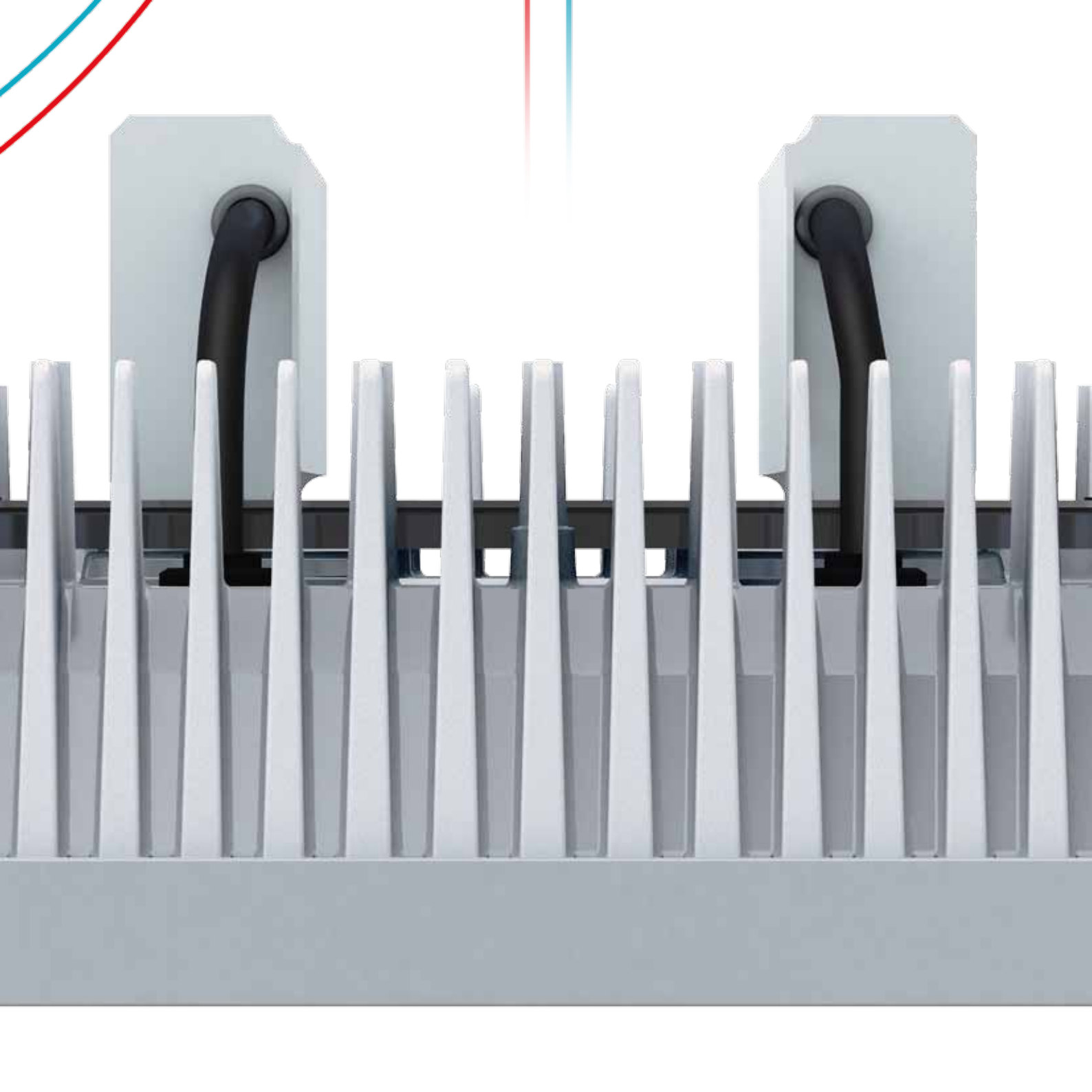


Illustration 1:1

THERMAL MANAGEMENT

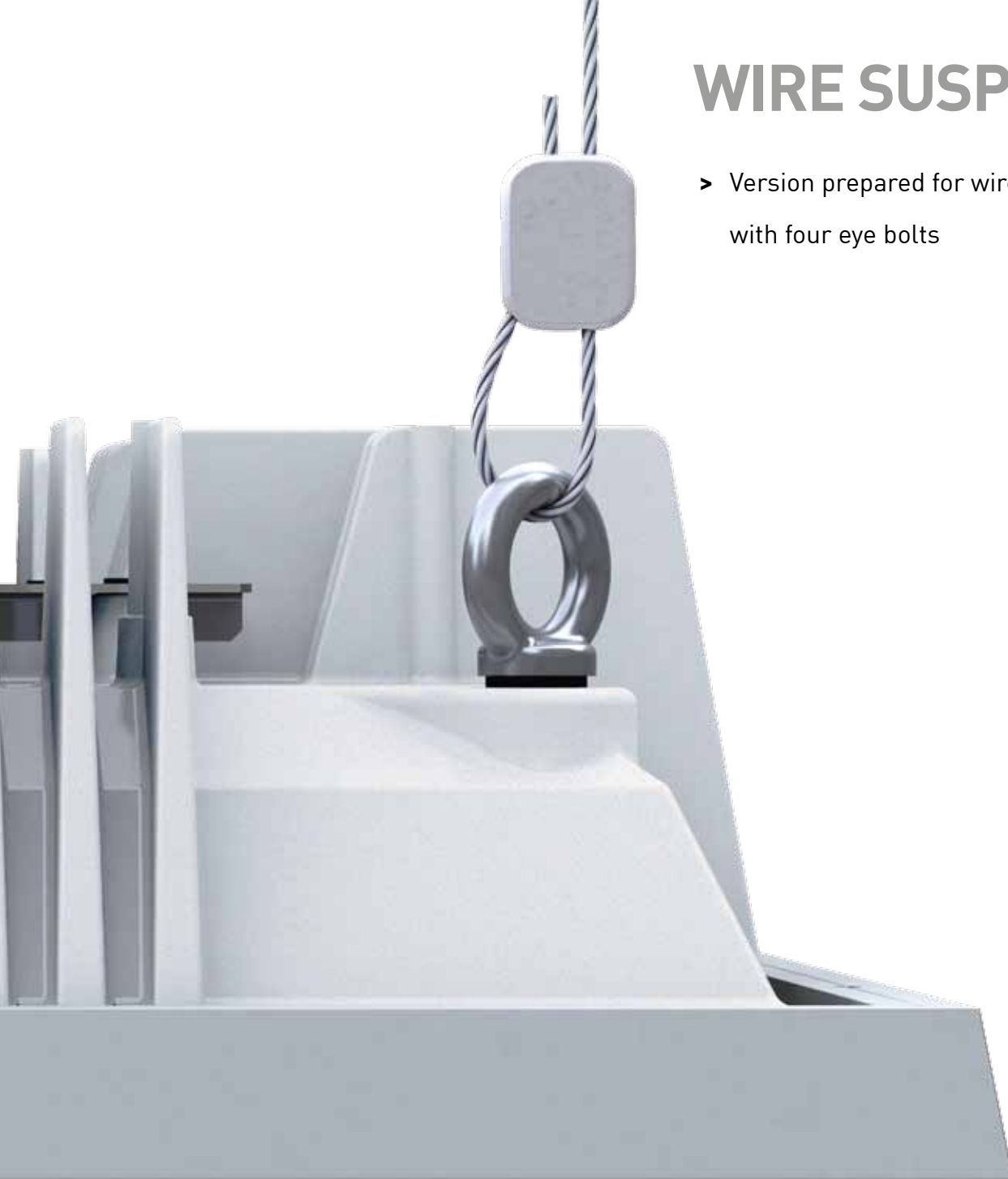
- High performance at ambient temperatures of $-35\text{ }^{\circ}\text{C}$ to $+45\text{ }^{\circ}\text{C}$
- 50.000 hours expected life at max. ambient temperature
- No heat-accumulation by contamination
- High ingress protection IP 65





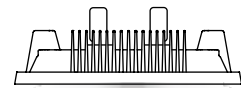
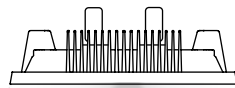
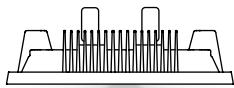
WIRE SUSPENSION

- Version prepared for wire suspension with four eye bolts



LIGHTING TECHNOLOGY

- > High end illumination (example: area 22 x 22 m, height 6.5 m, 7.5 m or 13.0 m with CENTAURUS 440)
- > High mounting height



300 Lux

300 Lux

300 Lux

6.5 m

7.5 m

13.0 m

Large-scaled storage with uniform illumination of the area

Spacious workshop with uniform illumination of the effective area

High industrial halls with accentuated illumination of the effective area

CENTAURUS

Version	Colour temperature	Luminous flux*	System power**	Ambient temperature	Medium beam version Article no. +A+B	Wide beam version Article no. +A+B	Narrow beam version Article no. +A+B
CENTAURUS 230W	■ 830/3000 K	22110 lm	186 W	-35°C to +45°C	915 230 33 __	915 230 43 __	915 230 23 __
CENTAURUS 300W	■ 830/3000 K	26740 lm	244 W	-35°C to +40°C	915 300 33 __	915 300 43 __	915 300 23 __
CENTAURUS 340W	■ 830/3000 K	33160 lm	265 W	-35°C to +40°C	915 340 33 __	915 340 43 __	915 340 23 __
CENTAURUS 440W	■ 830/3000 K	40100 lm	354 W	-35°C to +30°C	915 440 33 __	915 440 43 __	915 440 23 __
CENTAURUS 230N	□ 840/4000 K	23370 lm	186 W	-35°C to +45°C	915 230 34 __	915 230 44 __	915 230 24 __
CENTAURUS 300N	□ 840/4000 K	28440 lm	244 W	-35°C to +40°C	915 300 34 __	915 300 44 __	915 300 24 __
CENTAURUS 340N	□ 840/4000 K	35050 lm	265 W	-35°C to +40°C	915 340 34 __	915 340 44 __	915 340 24 __
CENTAURUS 440N	□ 840/4000 K	42670 lm	354 W	-35°C to +30°C	915 440 34 __	915 440 44 __	915 440 24 __
CENTAURUS 230C	■ 750/5000 K	25360 lm	186 W	-35°C to +45°C	915 230 35 __	915 230 45 __	915 230 25 __
CENTAURUS 300C	■ 750/5000 K	30990 lm	244 W	-35°C to +40°C	915 300 35 __	915 300 45 __	915 300 25 __
CENTAURUS 340C	■ 750/5000 K	38050 lm	265 W	-35°C to +40°C	915 340 35 __	915 340 45 __	915 340 25 __
CENTAURUS 440C	■ 750/5000 K	46490 lm	354 W	-35°C to +30°C	915 440 35 __	915 440 45 __	915 440 25 __
CENTAURUS 230WHC	■ 930/3000 K	18090 lm	186 W	-35°C to +45°C	915 230 31 __	915 230 41 __	915 230 21 __
CENTAURUS 300WHC	■ 930/3000 K	21880 lm	244 W	-35°C to +40°C	915 300 31 __	915 300 41 __	915 300 21 __
CENTAURUS 340WHC	■ 930/3000 K	27130 lm	265 W	-35°C to +40°C	915 340 31 __	915 340 41 __	915 340 21 __
CENTAURUS 440WHC	■ 930/3000 K	32820 lm	354 W	-35°C to +30°C	915 440 31 __	915 440 41 __	915 440 21 __

* Luminous flux at Tc point 55°C
** Rounded performance ratings

Cover screen / A

4 = PC clear (fracture proof)
6 = safety glass cover screen (ESG)

Installation type / B

2 = swivel bracket
6 = prepared for wire suspension

CENTAURUS OPTIONS

Version	Article no.
Ball impact resistant version with swivel bracket	available on request
Night setback	available on request
Half-peak mode	available on request
Emergency light mode in continuous operation, incl. halogen-free connecting cable (2 m), 2 x 3 x 1,5 mm ² or 2 x 5 x 1,5 mm ² (for dimmable version)	available on request
LUCON® luminaire connection system	100 111
Vibration-proof version with anti-vibration damper for swivel bracket version	available on request
Swimming pool version	available on request

NORKA

Norddeutsche Kunststoff-
und Elektrogesellschaft
Stäcker mbH & Co. KG

Lichttechnische Spezialfabrik

Contact
Sportallee 8
22335 Hamburg
Germany

P. +49.40. 51 30 09-0
F. +49.40. 51 30 09-28

info@norka.de
www.norka.de